

1. Open the mobile browser to scan the QR code, Download the APP, and install it on the mobile phone.

The software is called: LED Display

2. Turn on the mobile phone Bluetooth, turn on the mobile phone positioning, press the badge power on button (the button close to the badge USB), and the badge power on; Then long press the power on button to enter the Bluetooth connection state. **No need to pair manually**



3 Click this icon to enter the software interface, enter the desired text (the speed and mode at the bottom can be adjusted), then click Back, and click the Send button at the bottom right corner of the software. Bluetooth will automatically connect and send the content to be displayed

### matters needing attention:

- 1 Please charge the badge for more than 3-4 hours each time, and the charging voltage is 5V
- 2 Please keep the badge dry and clean, and pay attention to waterproof
- 3 Do not place it in a place with too high temperature or in the car in the sun

**Switch description**

1 Press 3 seconds to turn on  
Press 1 seconds to turn off  
After power on, long press the power on button to enter the Bluetooth mode

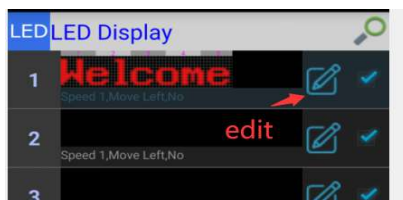
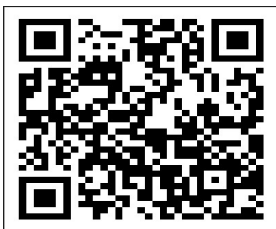
USB →

Switch on/off ① →

brightness/  
Message selection ② →

Bluetooth profile

2 Gently press the switch to select the message  
Press and hold the switch to adjust the brightness



The badge's Bluetooth feature automatically pairs, so there's no need to manually pair it with a phone. Once you enter the text into the editing software, simply send it. When the software indicates a communication timeout, please verify that the phone's GPS positioning is enabled.



# LED 显示屏软件下载



## LED显示屏控制软件

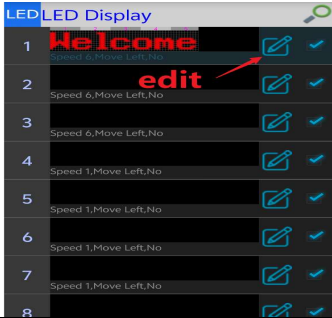
Click here to download

android版本下载地址:

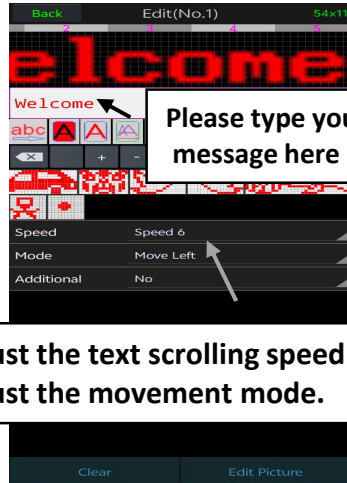
Android点击下载



Software icon

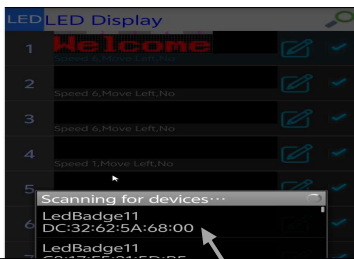


Once you've typed in the text, click Send.



Please type your message here

Adjust the text scrolling speed. Adjust the movement mode.



Multiple LED nametags have entered Bluetooth connection mode. Simply click on one of the LED nametags.

Bluetooth connection successful. Text change successful.

